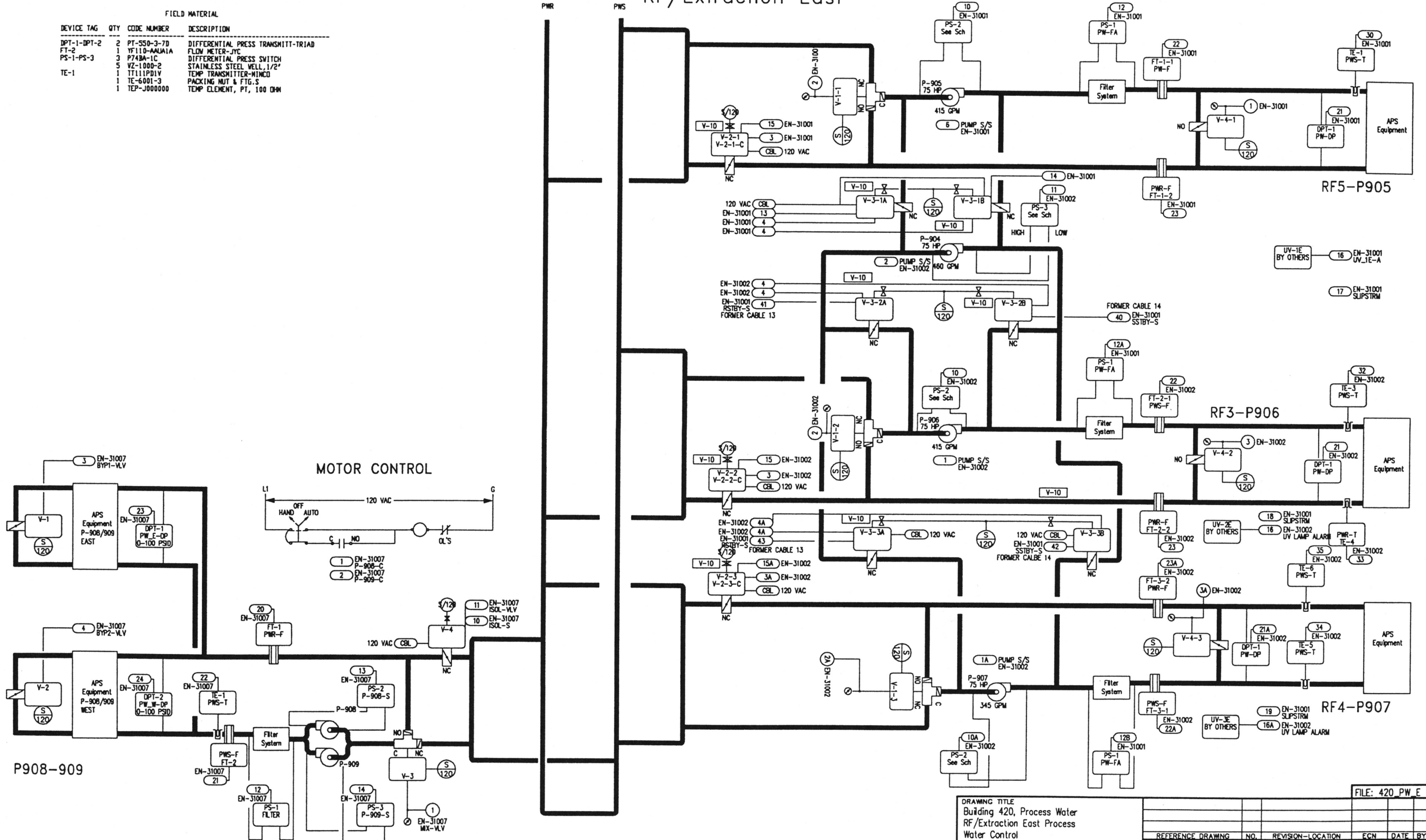


# Bill of Material

# Process Water Flow Diagram for Building 420 RF/Extraction East

FIELD MATERIAL			
DEVICE TAG	QTY	CODE NUMBER	DESCRIPTION
DPT-1-DPT-2	2	PT-550-3-7D	DIFFERENTIAL PRESS TRANSMIT-TRIAD
FT-2	1	VF110-AAJAA1A	FLOW METER-JYC
PS-1-PS-3	3	P74BA-1C	DIFFERENTIAL PRESS SWITCH
TE-1	5	VZ-1000-2	STAINLESS STEEL WELL, 1/2"
	1	TT111PD1V	TEMP TRANSMITTER-MINCO
	1	TE-6001-3	PACKING NUT & FTG.S
	1	TEP-J000000	TEMP ELEMENT, PT, 100 OHM



DRAWING TITLE		FILE: 420_PW_E	
Building 420, Process Water RF/Extraction East Process Water Control Control Module Hardware			
REFERENCE DRAWING NO.	REVISION-LOCATION	ECN	DATE BY
SALES ENGR PROJECT WGR/APPL ENGR	DRAWN	APPROVED	
JP	SF DCS	BY SF DATE 10/19/94	DATE
PROJECT		CONTRACT NUMBER	
The Argonne National Labs Advanced Photon Source Campus 9700 Cass Avenue South Argonne, IL 60439		91390-0009	
JOHNSON CONTROLS Systems & Services Division		DRAWING NUMBER	
3007 WALMO ROAD ARLINGTON HEIGHTS ILLINOIS 60005 708/384-1500 Main 708/806-4438 Eng		91-9-D-02B	